

CLEAR LEAF[®]

INSECTICIDE | MITICIDE

**MINIMIZE RESISTANCE
AND MAXIMIZE PERFORMANCE**



**CLEARLEAF[®] INSECTICIDE/MITICIDE
IS THE CLEAR 3-IN-1 CHOICE TO PROTECT
PLANTS AND PROFITS**

Insects have been plaguing operations for too long, drawing necessary nutrients from your plants and potential profits from your bottom line. You need a solution formulated with insect resistance in mind. ClearLeaf® Insecticide/Miticide



offers greenhouse operations a **smarter, synergized tool** to protect plants and profits.

The synergist in ClearLeaf® Insecticide/Miticide, Piperonyl Butoxide, works by shutting down the pest's natural defense mechanisms—the mixed-function oxidase enzymes that allow insects to break down insecticides before they can do their job. Thus, ensuring the active ingredients in ClearLeaf® Insecticide/Miticide work at full strength, delivering a powerful punch against even the toughest, most resistant pests.



When resistance threatens your operation, don't just fight back—fight smarter.

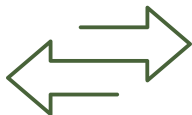
With ClearLeaf® Insecticide/Miticide, you can take control of resistance before insects take control of your plants.



SYNERGIZE YOUR FIGHT AGAINST INSECT RESISTANCE

CLEAR LEAF[®]

INSECTICIDE | MITICIDE



Two modes of action
from two classes of
chemistries (3A & 6) plus
a synergist



Broad-spectrum control
and kills multiple, listed
insects and mite species



Two active ingredients
(Taufluvinate; Abamectin)
and a synergist (Piperonyl Butoxide)
for convenient 3-in-1 control

FEATURES AND BENEFITS

- **Synergized dual-acting miticide.**
- Non-phytotoxic formula with maximum performance ratios that can be used all year round.
- Conveniently formulated to take the guess work and labor out of mixing products together, eliminating the risk of over or under mixing.
- For commercial use for insect and mite control in greenhouses and lathe/shade houses as well as applications to outdoor areas on and around field grown trees, ornamentals, foliage cuttings, bedding plants, flowers, and woody herbaceous ornamentals.
- Helps limit the development of insect replacement populations.
- Combination of active ingredients is ideal for managing resistance development.
- Non-phytotoxicity applies to a broad spectrum of plant materials.
- Minimizes amount of spraying and tank mixing with other products, while lowering tank concentration for maximum effectiveness.
- Can be used as part of a tank mix with insecticides from different groups such as Enstar[®] AQ Insect Growth Regulator.
- Works as part of a comprehensive IPM program.
- Synergize and save money, time, plants, and profits.



INSECTS CONTROLLED



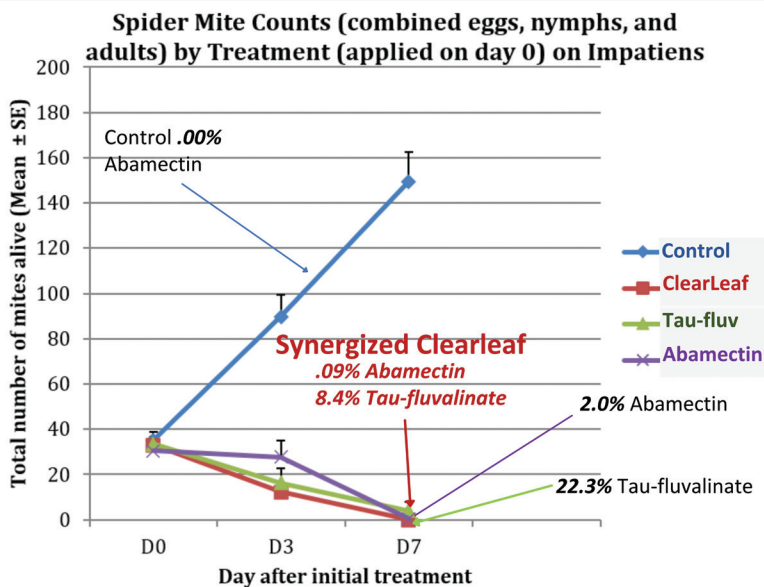
In addition to the common mite species such as spider mites, ClearLeaf[®] Insecticide/Miticide protects against a variety of labeled problem-causing culprits:



- Aphids
- Mealybugs
- Leaf Feeding Caterpillars: Tent, Orlando, Gypsy Moth, Bagworm, and Canker Worm
- Crickets
- Ticks: Brown Dog Ticks, American Dog Ticks, Lone Star Ticks, and Deer Ticks
- Armyworms
- Cutworms
- Springtails (Collembola)
- Adelgids
- Mosquitoes
- Earwigs
- Thrips
- Lygus Plant Bugs
- Beetles: Flea, Cucumber, and Elm Leaf
- Leafhoppers
- Weevils*: Strawberry Root, Obscure Root, and Blackvine Root
- Psyllids
- Millipedes*
- Silverfish
- Firebrats
- Chinch Bugs
- Asian Lady Beetles*
- Whiteflies
- Sowbugs
- Glassy-Winged Sharpshooters
- Stink Bugs
- European Red Mites
- Two-spotted Spider Mites
- Carmine Spider Mites
- Southern Red Mites
- Spruce Spider Mites
- Tarsonemid Mites**: Cyclamen, Broad Mites
- Eriophyid Mites: Rust, Bud Mites

*Except in California

**For tarsonemid mites, repeat applications to newly developing tissue may be necessary to maintain control






THE OUTSTANDING EFFICACY OF CLEARLEAF® INSECTICIDE/MITICIDE

ClearLeaf® Insecticide/Miticide has been rigorously tested in multiple efficacy studies to ensure its performance against greenhouse pests. These studies included both lab-based trials using plant cuttings and greenhouse-based trials conducted on full-sized commercial plants.

Across these tests, ClearLeaf® Insecticide/Miticide demonstrated strong control, particularly against spider mites and whiteflies, without showing any signs of phytotoxicity at labeled application rates.

SYNERGIZED INSECT CONTROL WITH CLEARLEAF® INSECTICIDE/MITICIDE

- Synergist blocks insect and mite resistance, enhancing active ingredient performance.
 - Enables lower application rates without sacrificing effectiveness.
 - Delivers results comparable to Abamectin and Mavrik Aquaflo®.
 - Mites are gone by day seven.
 - Pre-formulated and non-phytotoxic to simplify use and protect plants.
 - The secret is in the synergist, and the results speak for themselves.
- 

CULTIVATING SUCCESS FOR GREENHOUSES AND NURSERIES

ENSTAR® AQ INSECT GROWTH REGULATOR



Growers need an insect control product that's as gentle on plants and beneficials as it is effective against harmful insects. Look no further than Enstar® AQ Insect Growth Regulator.

- Water-based non-phytotoxic formulation that delivers broad-spectrum and long-residual control of a wide variety of labeled insects.
- Causes adult insects to lay sterile eggs after coming into contact with its active ingredient, S-Kinoprene.
- Can be rotated and used in tandem with Mavrik Aquaflo® Insecticide/Miticide, offering more flexibility for your IPM program and even greater control.

**DON'T TAKE OUR
WORD FOR IT...
CHECK OUT THESE
USER TESTIMONIALS**

ClearLeaf® Insecticide/Miticide isn't the only tool in our arsenal when it comes to keeping greenhouse and nursery insects at bay. Check out more options from our product line:

MAVRIK AQUAFLOW® INSECTICIDE/MITICIDE



You never know what insects could be invading your greenhouse or nursery next. Mavrik Aquaflow® Insecticide/Miticide offers immediate and long-term control for a broad range of insects.

- Fast-acting formulation that kills a broad spectrum of listed greenhouse and nursery pests on contact or through ingestion.
- Non-phytotoxic; ideal tank-mix partner.
- Dry residue from Mavrik Aquaflow® is not harmful to honey bees.

“

ClearLeaf is a good broad spectrum that will kill mites and insects. It's going to fit into almost anybody's programs and be a good rotational tool. One word to describe ClearLeaf: Effective.

”

“

We saw some really good knockdowns. I definitely would call it a strong product. If you can reduce it to just one single spray, it is hundreds of labor hours saved. People need good options to fight resistance and ClearLeaf is definitely one that's out there.

”

“

The formulation of ClearLeaf is brand new, but it really is an oldie but a goodie. It's three oldies but goodies all in one place at the same time, in a way that really works. One word to describe ClearLeaf: Functional.

”

CLEAR LEAF[®]

INSECTICIDE | MITICIDE

FOR MORE INFORMATION
call 1.800.248.7763 or visit
CentralGrower.com



CENTRAL
 LIFE SCIENCES

SCAN TO LEARN MORE

